

NEWSLETTER

July 2024

HAMISH & SALLY DRURY,
TALINGA PASTORAL
COMPANY

Proposed hard rock quarry
Lot 1 DP 1239728, No.1848 Castlereagh Highway,
Gulgong NSW

GULGONG QUARRY PROJECT



Hamish and Sally Drury, of Talinga Pastoral Company, propose a hard rock quarry near an existing hard rock borrow pit that has been used by land-owners and the local council since the 1980s. The quarry site is strategically located in terms of proximity to the various renewable energy infrastructure projects approved or proposed within the Central-West Orana Renewable Energy Zone (CWO-REZ), including EnergyCo's extensive transmission line project, about 3.1km to the north, and Acciona's Orana Wind Farm project, located as close as 2km away.

This Newsletter provides an overview of some of the main features of the proposed hard rock quarry on land at the northern end of the 'Talinga' Farm Holding, fronting the Castlereagh Highway about 250 metres south of Tuklan Road.

Proposed Gulgong Quarry Project

Hamish and Sally Drury intend to lodge a development application (DA) seeking approval for a hard rock quarry on their land as follows:

- **Extraction rate:** Extraction of the hard rock resource up to a limit to 350,000 tonnes per annum from a resource containing approximately 4.6 million tonnes of rock.
- **Product transport:** A maximum of 60 loaded trucks per day using the existing access point to the Castlereagh Highway. The intersection with the highway is proposed to be upgraded.
- **Quarry footprint:** A quarry footprint of 7.34ha is proposed.
- **Hours of operation:** Limited to 7.00am to 6.00pm Monday to Saturday. Hours of blasting are to be restricted to 9.00am to 3.00pm Monday to Friday.
- **Drainage:** All quarry runoff drains to sediment basin inside the quarry.
- **Quarry life:** 25 years+.
- **Visual impact:** Quarry to proceed at depth, with quarrying shielded from view by intervening topography. Quarrying proceeds behind existing topography, working progressively to the north-west from the southern end of the pit.

Hamish and Sally Drury have engaged town planning consultants Outline Planning Consultants Pty Limited to prepare an Environmental Impact Statement (EIS) in support of the Project, including detailed technical assessments- well underway. Lodgement of the EIS is planned for September 2024.

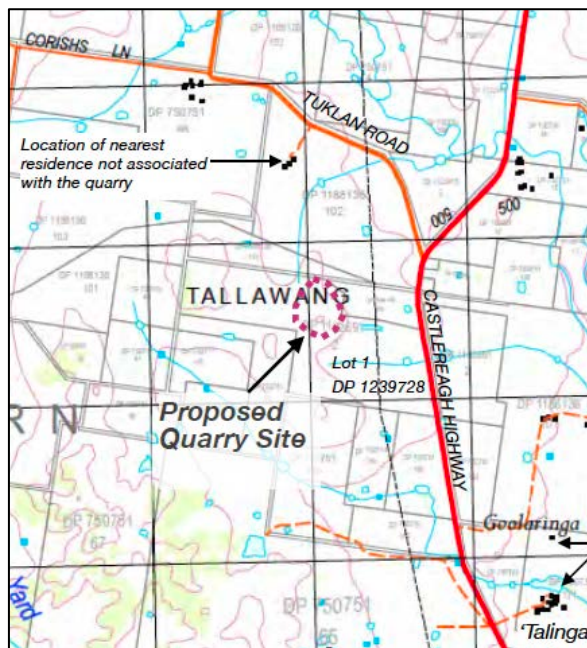


FIGURE: Location of Proposed Quarry

HOW TO CONTACT US

Further Information: Hamish and Sally Drury welcomes enquiries from interested neighbours and landowners regarding the proposed quarry project.

Contact Hamish: 0429 485 105

Contact Sally: 0439 759 616

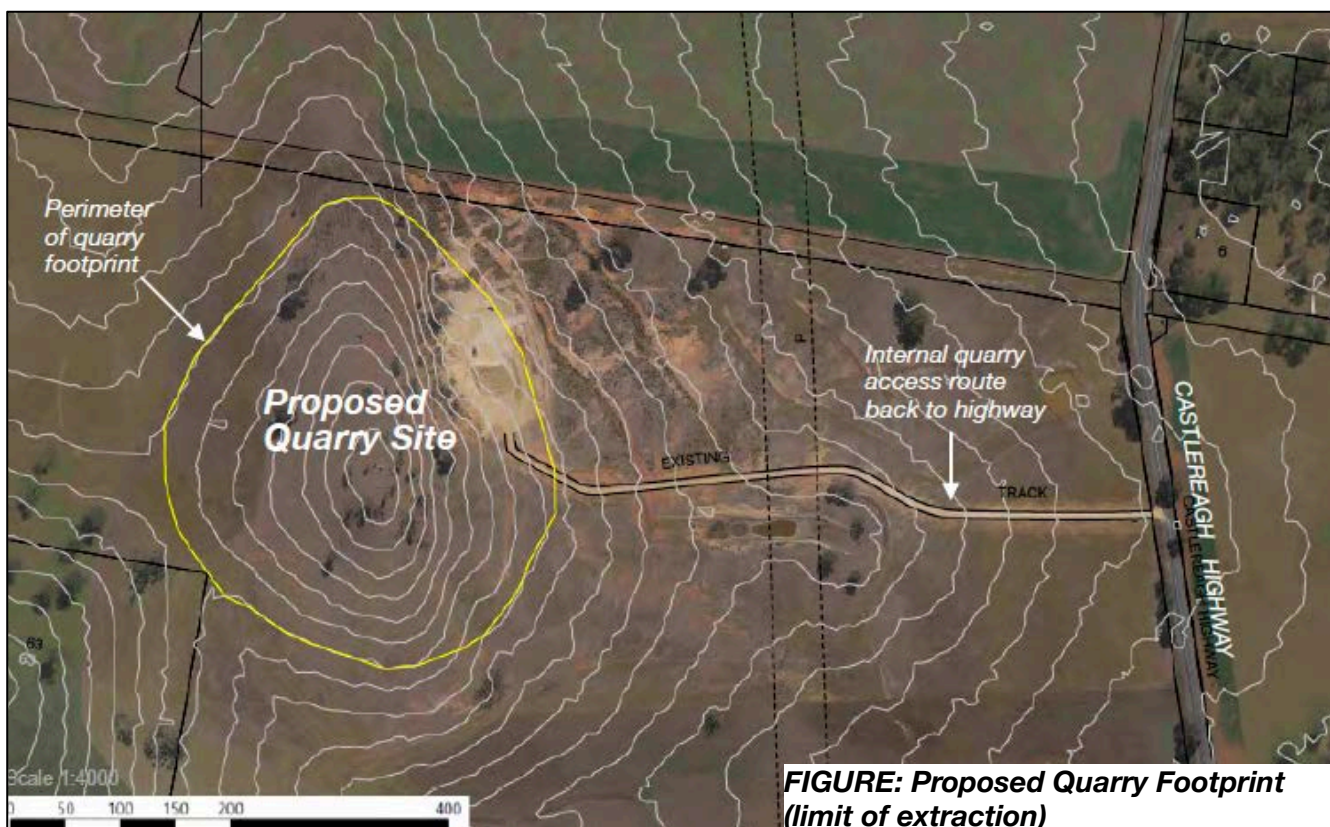


FIGURE: Proposed Quarry Footprint (limit of extraction)