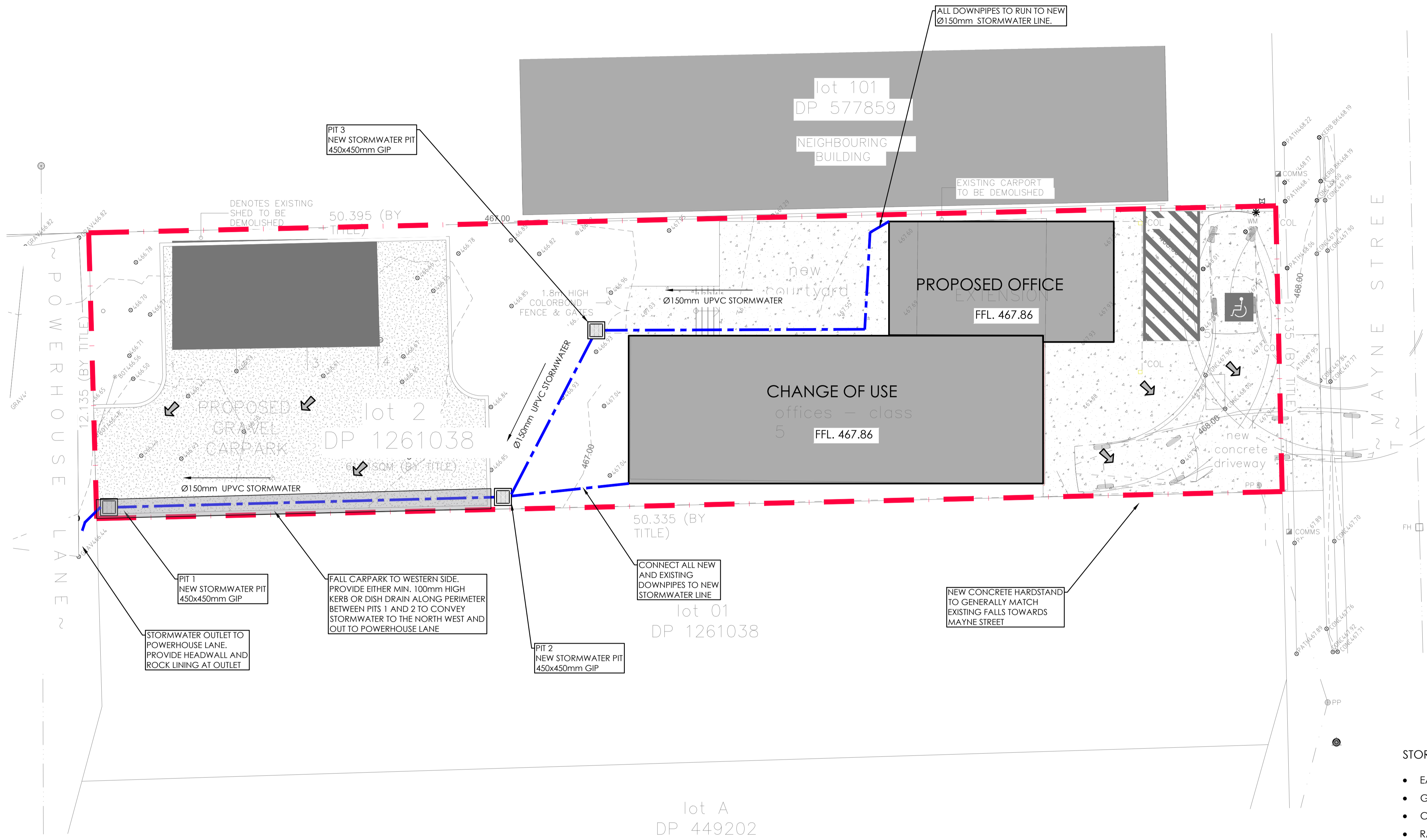


SYMBOL	DESCRIPTION
	DESIGN CONTOUR MAJOR (Xm)
	DESIGN CONTOUR MINOR (Xm)
	EXISTING STORMWATER LINE
	EXISTING PIT
	uPVC STORMWATER PIPE (SEALED) @1.0% MIN U.N.O.
	NEW STORMWATER LINE @ 1.0% MIN. FALL U.N.O.
	OPEN DRAINAGE CHANNEL (MIN. FALL 1:200 U.N.O.)
	Ø90 uPVC DOWNPIPE
	SURFACE INSPECTION OPENING
	GRADED TRENCH DRAIN (GD) (U.N.O.)
	GRADED INLET PIT (GIP) (U.N.O.)
	JUNCTION PIT (JP) (U.N.O.)
	CONCRETE HEADWALL
	OVERLAND FLOW PATH
	DESIGN LEVEL
	TOP OF KERB
	WATER TABLE
	FINISHED SURFACE LEVEL
	COVER LEVEL
	INVERT LEVEL
	FINISHED FLOOR LEVEL
	BENCH LEVEL
	NATURAL SURFACE LEVEL



- STORMWATER DESIGN NOTES**
- EAVES GUTTER AND DOWNPIPES SIZED ACCORDING TO AS/NZS 3500.3:2018
  - GUTTER SLOPE ASSUMED LESS THAN 1:500
  - CATCHMENT AREA MULTIPLIER = 1.21
  - RAINFALL INTENSITY USED IN DOWNPIPE AND GUTTER SIZING = 150mm/hr
  - RAINFALL INTENSITY USED IS 5% AEP, 5 MINUTE STORM FOR GULGONG.
  - RAINFALL INTENSITY AS PER BOM IDF (2016) FOR ZONE 55 MGA.

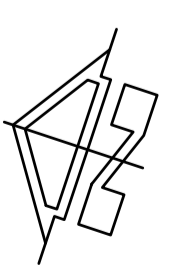
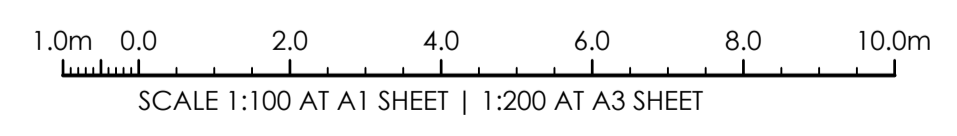
**WARNING:**  
BEWARE OF UNDERGROUND SERVICES. THE LOCATION OF SERVICES IF SHOWN, ARE INDICATIVE ONLY AND NO GUARANTEE IS GIVEN THAT ALL EXISTING SERVICES HAVE BEEN DOCUMENTED. THE CONTRACTOR IS RESPONSIBLE FOR LOCATING ALL EXISTING SERVICES WITHIN THE WORKS AFFECTED AREAS PRIOR TO ANY ON-SITE EXCAVATION.

**SERVICES NOTE:**

- EXISTING SERVICES SHOWN ARE BASED ON SURVEY DATA RECEIVED BY THIS OFFICE.
- ALL EXISTING SERVICES ARE SHOWN DIAGRAMMATIC ONLY. ALL SERVICES ARE TO BE CONFIRMED ON SITE PRIOR TO CONSTRUCTION.

	ROOF AREA (m <sup>2</sup> )	FLOWRATE (L/s)	DOWNPIPE SIZE	NO. OF DOWNPIPES	MIN GUTTER AREA (mm <sup>2</sup> )
EXISTING	110	5.1	90	3	7290
OFFICE	47	2.2	90	2	4803

**NOTE:**  
THIS IS A PLANNING DRAWING ONLY, FOR THE PURPOSE OF CONCEPTUAL DESIGN AND/OR PLANNING. FURTHER DETAILED ENGINEERING DESIGN INCLUDING SPECIFICATIONS, SIZING AND STORMWATER INVERTS TO BE PROVIDED PRIOR TO CONSTRUCTION CERTIFICATE AND FOR CONSTRUCTION ISSUE.



**STORMWATER MANAGEMENT PLAN**

SCALE 1:100 AT A1

ISSUED FOR APPROVAL ISSUE	25.02.2025	A	J.L.D.	NORTH POINT U.N.O.	ARCHITECT <b>BARNSON</b>	PROJECT <b>HELIX CONSTRUCTION</b> 4 FISHER STREET GULGONG NSW 2852	PROJECT <b>PROPOSED DEVELOPMENT</b> 140 MAYNE STREET GULGONG NSW 2850	DESIGNED --	DRAWN --	DATE FEB 25	SIZE --	CAD REF TX13000.00 - C01	 <b>TRIAxIAL CONSULTING</b> COMPLEX PROBLEMS RESOLVED SIMPLY HEAD OFFICE CERTIFICATIONS 	1300 874 294   TRIAXIAL.AU SUITE 12, LEVEL 14, 327 PITT STREET, SYDNEY NSW 2000 PO BOX A203, SYDNEY SOUTH NSW 1235 <b>TO BE PRINTED IN COLOUR</b>	DRAWING TITLE <b>STORMWATER MANAGEMENT PLAN</b>	PROJECT No. <b>TX13000.00 - C4.00</b>	DRAWING No. <b>A</b>	REVISION
	DATE	REV.	BY															

**NOT FOR CONSTRUCTION**