

DOCUMENT ON EXHIBITION

Rescission of Construction of New Pathways Policy

**Exhibition period: 28 days
18 August – 15 September 2023**

Please address any queries to
Council's Director Operations.

**Please submit your feedback in writing
addressed to the General Manager.**

Email:

council@midwestern.nsw.gov.au

Post:

Mid-Western Regional Council
PO Box 156
Mudgee NSW 2850

ADOPTED		VERSION NO	
COUNCIL MEETING MIN	212/13	REVIEW DATE	MAY 14
DATE:	6/6/13	FILE NUMBER	A0100021

Objective

To clarify Council's objective in providing and maintaining an integrated network of pathways throughout the urban areas in the region.

This policy will assist Council in achieving Theme 4, Goal 4.1 of the Community Plan, *'Connecting our Region High Quality Road Network that is Safe and Efficient'*

Policy

New pathways will be constructed within budgetary and resource constraints on both sides of a street for:

1. Arterial roads, CBD Roads and other roads where the traffic volume exceeds 2,500 vehicles per day (vpd).
2. Immediately adjacent to schools.

New pathways will be constructed within budgetary and resource constraints on one side of a street where traffic volumes are greater than 300 vpd and less than 2,500 vpd. No pathway will be constructed on streets having a traffic volume less than 300 vpd, unless it provides a link between sections of the existing pathway network. It is considered that with less than 300 vpd, traffic volumes are low enough for pedestrians to use the carriageway with reasonable safety.

Prioritisation of pathways for new construction will be based on:

1. Pedestrian Generators (Schools, Commercial Development, Parks)

2. Contribution to overall network of pathways

2-3. [Disabled needs](#)

3-4. Road Hierarchy

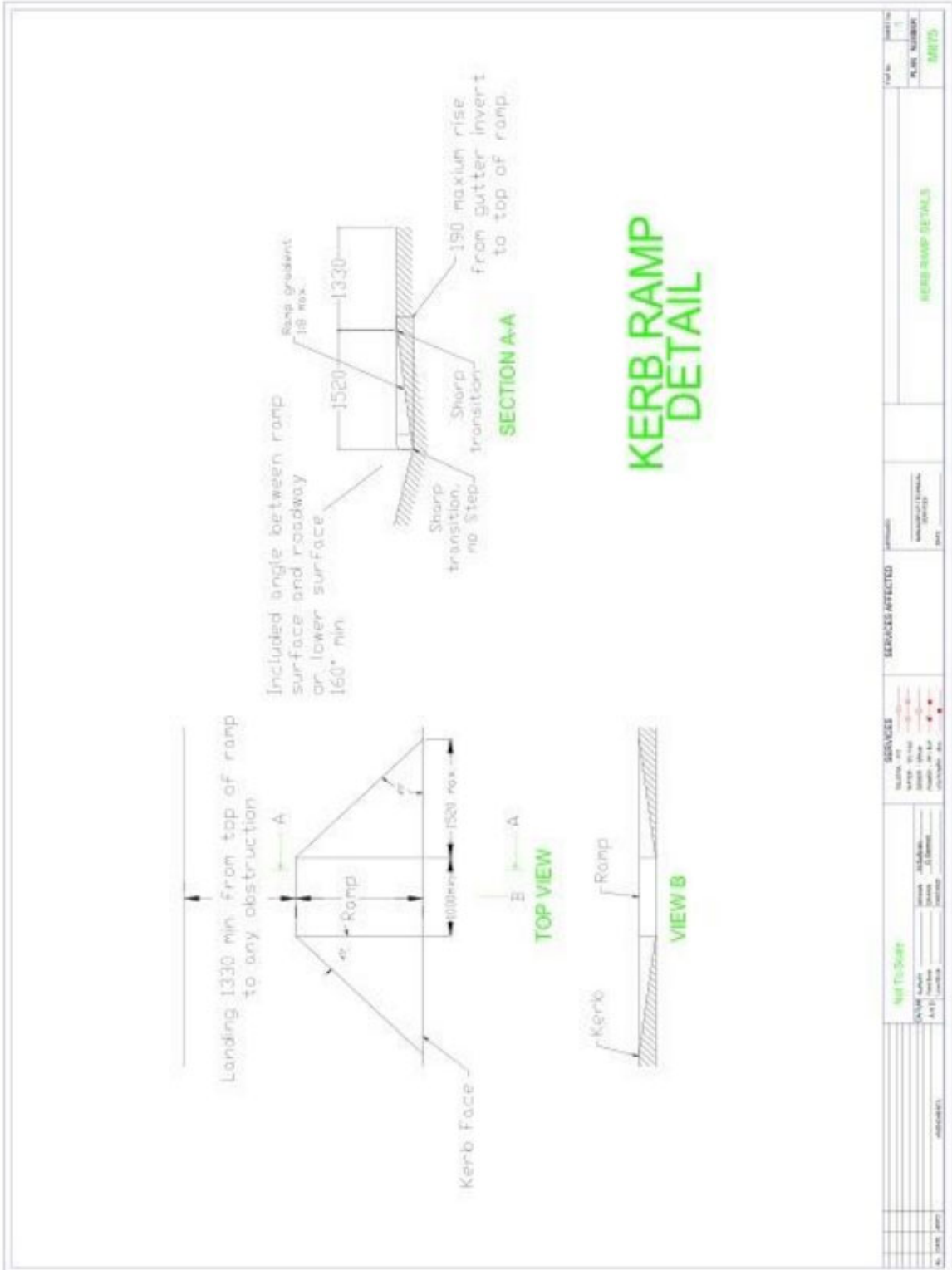
4-5. Pedestrian Volume

5-6. Proximity of adjacent pathway

6-7. Requests

- Generally, new pathways will be constructed 1200mm wide and offset 900mm from the property boundary within road reserves.
- Cycleways will be constructed 2400mm wide on an alignment to be determined by Council.
- They are to be constructed of 100mm thick concrete with a strength grade of N25 and a 50-80mm slump at time of placement.

- The thickness of the footpath will increase to 125mm thick in reserves or other areas where mowing will be carried out by self-propelled plant.
- The maximum nominal size of course aggregate shall be 20mm.
- The concrete shall be reinforced with F72 mesh at 40mm cover to the top, with laps and mesh support complying with AS3600.
- Concrete shall not be placed where the temperature of the surrounding air is higher than 32 C or lower than 10 C.
- [Ramps are to be to disabled standards.](#)
- Pram ramps shall be constructed at all street corners as detailed in the standard drawing below.
- 10mm wide keyed Expansion Joints are to be provided at spacing's not exceeding 6m, and on either side of each vehicular crossing.
- 6mm wide Control Joints are to be provided at 1.2m spacing's and formed by cutting the freshly screeded concrete to at least half the concrete depth. After finishing the surface the joints shall be struck with a tool to coincide exactly with the location of the cuts.



<p>AMTS</p> <p>DATE LAID: 11/06/13</p> <p>DATE: 11/06/13</p> <p>AMTS</p>		<p>SERVICES AFFECTED</p> <p>Water</p> <p>Sewer</p> <p>Gas</p> <p>Electricity</p> <p>Telecom</p> <p>Other</p>	<p>SERVICES</p> <p>Water</p> <p>Sewer</p> <p>Gas</p> <p>Electricity</p> <p>Telecom</p> <p>Other</p>	<p>PLAN NUMBER</p> <p>AMR75</p>
---	--	---	--	--