

# COMMUNITY NEWS



FEBRUARY, 2024

## NRL TRIAL GAME MATCH UP



### St George Illawarra Dragons take on Wests Tigers in a trial match hosted at Glen Willow Stadium in Mudgee on Saturday 24 February.

Council secured the game through its long standing relationship with St George Illawarra Dragons and looks forward to welcoming Wests Tigers to play for the first time at Glen Willow Stadium.

Gates open from 5pm, with the curtain raiser being played in an exciting match-up between the Mudgee Dragons and Gulgong Terriers. Kick off for the curtain raiser will be at 5.30pm, setting the stage for the main game at 8.05pm.

Attendees are encouraged to utilise the complimentary shuttle service available in

Mudgee. Buses will make regular rounds, picking up and dropping off passengers in the CBD and West Mudgee starting at 4.45pm and concluding at 7.45pm. The bus services will recommence after the conclusion of the main game.

Buses will be operating from Gulgong, Rylstone, and Kandos. This service can be added when booking tickets.

Tickets start at \$40 for grandstand seats, \$28 for adult general admission, \$18 for concession card holders, and \$18 for child general admission.

Council encourages fans who have not yet secured their tickets to visit [123tix.com.au](http://123tix.com.au). NRL games draw large crowds and tickets are in high demand.

\$28 cost of general admission adult ticket

\$80 cost of a family ticket 2 x adults and 2 x children

66% of attendees at previous NRL games were visitors to the region.



### FROM THE MAYOR'S DESK

Congratulations to all of our Australia Day winners and nominees, including Citizen of the Year, Donna Collins. It was great to see so many hard working residents recognised for their contributions. The community united for this special event, making it a fantastic day for everyone involved.

February marks the beginning of show season and in the coming weeks Mudgee, Gulgong, and Rylstone will display the best the region has to offer, including its stand out agricultural produce.

The region is gearing up for a big weekend at the end of the month, filled with

events, including St George Illawarra Dragons and Wests Tigers battling it out in an exciting match-up at Glen Willow Stadium. The Rylstone Show is also on Saturday 24 February, followed by the Country Championships race meet at Mudgee Racecourse on Sunday 25 February.

Make sure you visit Mudgee Arts Precinct for it's latest exhibition 'Triple Rainbow' by renowned artist Julian Meagher. This is an impressive body of work painted within the Mid-Western Region.

I encourage everyone to attend these great events.

Mayor Des Kennedy

# JULIAN MEAGHER

# 'TRIPLE RAINBOW' EXHIBITION



## MUDGEES ARTS PRECINCT

**Mudgee Arts Precinct is delighted to feature a new body of art by acclaimed Australian artist, Julian Meagher.**

The exhibition 'Triple Rainbow' will open on 2 February 2024 and continue until 28 April. It is an unapologetic exploration of new-romantic 'dreamscapes' based on landscapes painted around the Mid-Western Region.

Coinciding with a time of great fear caused by global unrest, Meagher's art explores unconditional love and signs of hope in the sky.

The exhibition will investigate links between nature and human emotions manifested in powerful experiences such as nostalgia, family holidays, falling in love and the beautiful but fleeting everyday moments as life passes us by.

Julian Meagher is a Sydney based artist who has exhibited extensively across Australia, Asia and America. Julian has been a finalist in the Archibald Prize and Wynne Prize.

Julian Meagher, *Triple Rainbow (Green Ray)* 2023

## TRANSFER OF COUNCIL'S BUSINESS WEB-PAGE

Mid-Western Regional Council has consolidated the Mudgee Region Business website onto Council's corporate website. This integration marks a significant step forward in streamlining access to essential resources to both businesses and residents in the community.

Council has created a one-stop hub on its main website where business owners can conveniently access business support and newsletters in one centralised location. This enhancement aims to simplify navigation and provide the community with a more user friendly experience.

These updates are now live on Council's website for the community to use. The transition has been carried

out as a commitment by Council to support the region's businesses with up to date links to training opportunities, grants and other useful information.

For more information and to view the new business web-page visit [midwestern.nsw.gov.au/Business/Business-support](http://midwestern.nsw.gov.au/Business/Business-support).



## NEWS IN BRIEF

### SIGN UP TO YOURWATER

Sign up to Council's Smart Water Meter portal, YourWater, and keep track of your water usage. Along with daily data on the amount of water being used in the home, customers can review water charges and set up email and SMS alerts to notify of possible water leaks and high consumption periods. Register at [yourwater.midwestern.nsw.gov.au](http://yourwater.midwestern.nsw.gov.au).

### SELF-SERVE AT THE LIBRARY

Skip the queues and borrow using your phone. Enjoy contactless self-service and easily borrow any title direct from the shelf by scanning the barcode with your smartphone. This free app contains a one-stop shop for all of the Library's services, and can be downloaded from the Apple Store or Google Play Store by searching MWRC Library.

### CULTURE DOSE FOR KIDS

Culture Dose for Kids is a new art's engagement program being offered at Mudgee Arts Precinct, in collaboration with the Art Gallery of NSW and Black Dog Institute. The program is for primary school children aged 9-12 with mild anxiety and their parent or caregiver. The free 8 week program will run on Saturday mornings, from 3 February - 27 March.

# COUNCIL STAFF

## PUBLIC INTEREST DISCLOSURE

Council staff have recently undergone training on the Public Interest Disclosures Act 2022 (PID Act). The PID Act applies to all NSW public sector agencies and provides a framework for public officials to report serious wrongdoing in the public sector. It not only encourages, but protects individuals who come forward to expose corruption, ensuring their safety and protection from detrimental action.

This training has equipped Council staff with a thorough understanding of the Act and the steps involved in

making disclosures as well as ensuring those with responsibilities under the Act know what to do when a disclosure is made. Our team is trained to identify and address issues that compromise Council's integrity.

This Act is pivotal for fostering a strong 'speak up' culture, and aligns with Council's commitment to serving the public interest and maintaining ethical standards at our core.

The Public Interest Disclosures Policy is available on Councils website, [midwestern.nsw.gov.au](http://midwestern.nsw.gov.au).



## FAMILY DAY CARE

Mid-Western Regional Family Day Care is a network of trained and registered educator's who provide care for other peoples children in their own homes, helping to nurture young minds in their formative years in preparation for future learning.

Family Day Care are currently seeking dedicated and qualified educators within our region. Grant funding has been secured which can be used for updating educator's certificates and purchasing essential resources.

To express interest in joining the team, contact Mid-Western Regional Council via [family.daycare@midwestern.nsw.gov.au](mailto:family.daycare@midwestern.nsw.gov.au)

## MUDGEE AIRPORT EXPRESSIONS OF INTEREST

Mudgee Airport serves as a vital connection between Mudgee and Sydney via FlyPelican, and is under the ownership and management of Mid-Western Regional Council. The Airport serves both public and private aviation, offering scheduled passenger services for both commercial and private chartered planes, along with commercial helicopter operations.

Council is inviting expressions of interest for the lease of 13 fully serviced lots. The lots are tailored

for airport industry and development, including aircraft storage, engineering services, flying schools, and aircraft detailing.

Council has continually enhanced airport facilities, fostering growth and innovation. Mid-Western Regional Council looks forward to engaging with stakeholders to maximize the potential of the airport, contributing to the region's connectivity and economic development. Visit [midwestern.nsw.gov.au](http://midwestern.nsw.gov.au) for details.



**MUDGEE AFTER SCHOOL FUN**  
Mudgee Library introduces Brainy Bunch, a free fortnightly after-school program for K-2 students this term. Join us for fun and educational activities like brick building, board games, science experiments and crafts. Develop cognitive skills and creativity in an engaging environment. Bookings are essential at [mwrclibrary.eventbrite.com](http://mwrclibrary.eventbrite.com).

**IT'S SHOWTIME IN THE REGION**  
The region's annual shows provide the community with an opportunity to celebrate local achievements and experience the region's agricultural prowess. The Gulgong Show will be held at Gulgong Showground, 17 February. The Rylstone-Kandos Show will be held at Rylstone Showground on 24 February, and the Mudgee Show will be held at Mudgee Showground from March 1-3.

**OFF LEASH DOG PARKS**  
There are four off-leash dog parks in our region located in Mudgee (Glen Willow), Gulgong (People's Park), Rylstone (behind Rylstone Showground), and Kandos (Darton Park). These parks are designated areas for dogs to run without a leash under owner supervision. Please respect the parks, other users, and clean up after your dog using the bags and bins provided.

**MID-WESTERN YOUTH COUNCIL**  
Council offers a platform for individuals aged 13-21 in the region to have a voice in helping determine Council's priorities, and bring attention to youth issues. Youth Councillor's play a direct role in organising youth events and enhancing facilities. If you have any suggestions or concerns contact Youth Council by emailing [youth.services@midwestern.nsw.gov.au](mailto:youth.services@midwestern.nsw.gov.au).



CR DES KENNEDY  
MAYOR  
6378 2850



CR SAM PAINE  
DEPUTY MAYOR  
0407 225 285



CR PAUL CAVALIER  
0403 995 533



CR KATIE DICKER  
0407 234 849



CR ALEX KARAVAS  
0428 670 905



CR ROBBIE PALMER  
0407 246 381



CR PETER SHELLEY  
0403 156 405

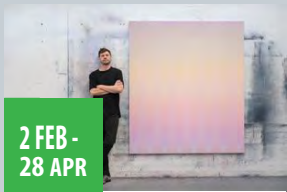


CR PHIL STODDART  
0407 208 730



CR PERCY THOMPSON  
0428 740 226  
6374 0226

## EVENTS CALENDAR



2 FEB -  
28 APR

### Julian Meagher Exhibition

#### Mudgee Arts Precinct

The exhibition 'Triple Rainbow' by Australian artist Julian Meagher will be on exhibition until April 28.



3-4  
FEB

### Town Hall Cinema

#### Mudgee Town Hall

Generally held on the first weekend of each month. Adults \$15, children/concession \$10 and children under 5 free. Bookings and screenings on Council's website.

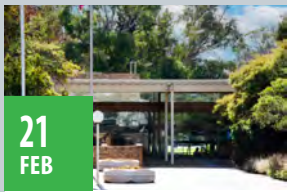


17  
FEB

### Gulgong Show

#### Gulgong Showground

Head along to this traditional country show to experience a rodeo, exhibitions, and entertainment.



21  
FEB

### Mid-Western Regional Council Meeting

#### Council Chambers, Market Street, Mudgee from 5.30pm

Live stream is available on Council's website.



24  
FEB

### Rylstone- Kandos Show

#### Rylstone Showground

The Rylstone show is a highlight on the New South Wales agriculture show calendar.



24  
FEB

### St George Illawarra Dragons Vs Wests Tigers

#### Glen Willow Stadium

Watch St George Illawarra Dragons and Wests Tigers battle it out at Glen Willow Stadium. Tickets at [123tix.com.au](https://www.123tix.com.au).

All information correct at the time of publication. Events may be subject to change. Please contact event organisers for further details.



Stay up to date with Council news as it happens...

like 'Mid-Western Regional Council' on Facebook  
follow '@choosemudgeeregion' on Instagram  
follow 'mwrCouncil' on TikTok



### Mid-Western Regional Council

86 Market Street | PO Box 156 MUDGEE 2850  
T 02 6378 2850 or 1300 765002 | F 02 6378 2815  
E [council@midwestern.nsw.gov.au](mailto:council@midwestern.nsw.gov.au)  
[midwestern.nsw.gov.au](http://midwestern.nsw.gov.au)

## Live.

The new Country Universities Centre (CUC) opens its doors for the first semester of study in February 2024. Located at 70 Court Street Mudgee, the centre offers higher education study facilities in the region. The CUC fosters a nurturing atmosphere for students, offering facilities that grant entry to cutting edge technology, a community of peers and guidance from a dedicated centre manager for academic support.

## Work.

Mid-Western Regional Council is an award winning organisation offering a range of career opportunities in areas such as admin, planning and development, water supply, parks and gardens, libraries, operations and community services. Council is an equal opportunity employer and values diversity in its people. For current positions vacant, go to 'Employment' on Council's website.

## Invest.

Current data shows that there are 25,795 people living in the Mid-Western region, working in 11,716 jobs, and has an annual economic output of \$7.047 billion. The region's largest industries are mining; healthcare and social services; retail trade; construction; accommodation and food services; education and training; agriculture, forestry and fishing, in that order.

## Visit.

The 2024 Newhaven Park Country Championships are returning to Mudgee Racecourse for the central districts qualifying heat on Sunday 25 February. The prestigious race meeting is a truly exciting day with an 8 race program, fashions on the field, musical entertainment, food trucks and more. Tickets for race day enthusiasts are available through [123tix.com.au](https://www.123tix.com.au).