

COMMUNITY NEWS



MARCH, 2025

PUMP TRACK OPEN



Mudgee's brand new Pump Track is now open at Glen Willow. The highly anticipated facility was unveiled late last year, in time for the summer school holidays.

The event drew a large crowd of parents and children, keen to be the first to ride the new track. Nine year-old Charlie Rixon, who has previously presented to Council about activities for youth, officially opened the park alongside Mayor Des Kennedy, Member for Calare, Andrew Gee, and Moolarben Coal General Manager, Brian Wesley.

Designed for riders of all experience levels, the track caters for all ages from toddlers to adults. It's one of the largest tracks in NSW and tipped to be another key drawcard

for Mudgee. The design was developed in close consultation with the community and includes the features identified during this process.

The project was a joint initiative, with funding from Council, the Australian Government's Local Roads and Community Infrastructure Program (Phase 4), Moolarben Coal and the NSW Government's Clubgrants Category Three Infrastructure Grants.

\$421.5k

Local Roads and Community Infrastructure Program

\$350k

Moolarben Coal

\$205k

NSW Government Clubgrants



FROM THE MAYOR'S DESK

At the end of 2024 we officially opened the long-awaited Mudgee Pump Track. Council couldn't be happier with the turnout. I know local kids have been chomping at the bit to try it and it was great to see them arriving as early as they could to do some laps.

From 3 to 16 March it's time to shine at the NSW Seniors Festival. This event is a fantastic opportunity to recognise the role and contributions of older adults to our local community.

Mudgee Arts Precinct is now home to the new Empower Cafe, an Australian Disability Enterprise (ADE) project,

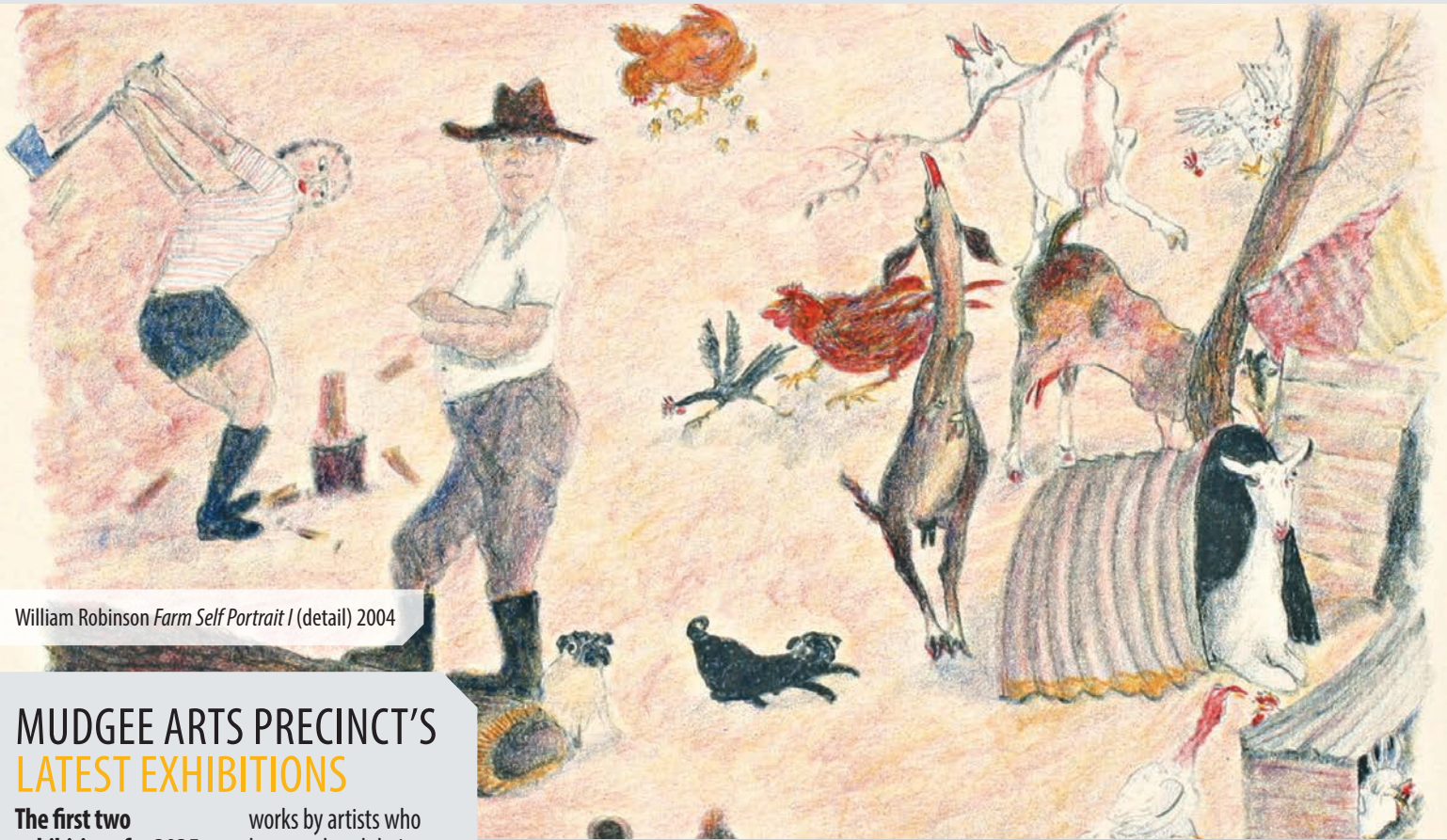
operating under Council. With a range of coffee, drinks and light food options, the cafe aims to provide a welcoming environment for staff and the community.

Important safety improvements on Cope Road are currently underway and continuing into April. The road will remain open during this project.

Lastly, I encourage any keen fishers to join the Putta Bucca Carp Muster on 22 March and help reduce the number of carp in our waterways.

Mayor Des Kennedy

MUDGEE ARTS PRECINCT FIRST EXHIBITION FOR 2025 CELEBRATES RURAL LIFE



William Robinson *Farm Self Portrait I* (detail) 2004

MUDGEE ARTS PRECINCT'S LATEST EXHIBITIONS

The first two exhibitions for 2025 at Mudgee Arts Precinct are now open to the public until 23 March.

The Good is a major new solo exhibition by Western Australian artist Anna Louise Richardson. The artist works primarily in large scale drawing, rendering realistic scenes of her rural life as part of a multi-generational farming family.

The concurrent exhibition, *Udder Bliss: Life on the Farm* features

works by artists who have explored their own farming life, including one of Australia's foremost landscape artists, William Robinson.

Other artists include Rosalind Atkins, Jenny Bell, Philip Davey, Kit Hiller, Nick Howson, Janet Luxton and Jimmy Rix.

Mudgee Arts Precinct is open seven days a week from 9am to 5pm. Entry is free. For information, visit mudgeeartsprecinct.com.au.

EMPOWER CAFE OPEN NOW AT MAP

Residents and visitors can now enjoy coffee and cake at one of Mudgee's newest additions, Empower Cafe. Serving coffee, milk shakes, cold drinks, cakes, slices, muffins, pies, sausage rolls and quiches, Empower Cafe aims to create a welcoming and comfortable environment for staff members, community and visitors.

The cafe, situated at the Mudgee Arts Precinct, is an Australian Disability Enterprise (ADE) project operating under Council. The ADE provides meaningful employment opportunities for individuals with disabilities.

Empower Cafe provides a range of roles from barista to front of house duties, allowing employees to develop diverse skills in a supportive environment. This initiative not only enhances the employability

of individuals with a disability but also promotes an inclusive community. The cafe will serve as a positive space that fosters community spirit and well-being.

Empower Cafe is open Monday to Friday from 8am to 3pm, with weekend hours planned for the future.



NEWS IN BRIEF

FISHING TACKLE DISPOSAL
To protect people and wildlife, fishers are reminded to dispose of all fishing tackle appropriately. Bins are located along the Cudgegong River and in the parking lot at Putta Bucca Wetlands. The purple bins in Lawson Park are for fish disposal only. If you see an animal injured by fishing line or hooks, please contact WIRES on 1300 094 737 or complete an online rescue form wires.org.au/report-a-rescue.

DOCUMENTS ON EXHIBITION
Council regularly uploads documents for public exhibition to our website to engage the community and gather insights through written submissions. Information about these documents is posted on Council's Facebook page with links provided for easy access. For more information please visit midwestern.nsw.gov.au/Council/Documents-on-exhibition.

FREE TUTORING AVAILABLE THROUGH THE LIBRARY
The Library offers free tutoring to students in years 3 to 12 who are Library members via the online study help service Studioity. Students can connect live in real time with a qualified tutor for a range of subjects. They can also upload essays and drafts for feedback. To find out more about this free service visit midwestern.nsw.gov.au/Community/Libraries/E-resources.

UPGRADES ON COPE ROAD FROM GULGONG TO ULAN

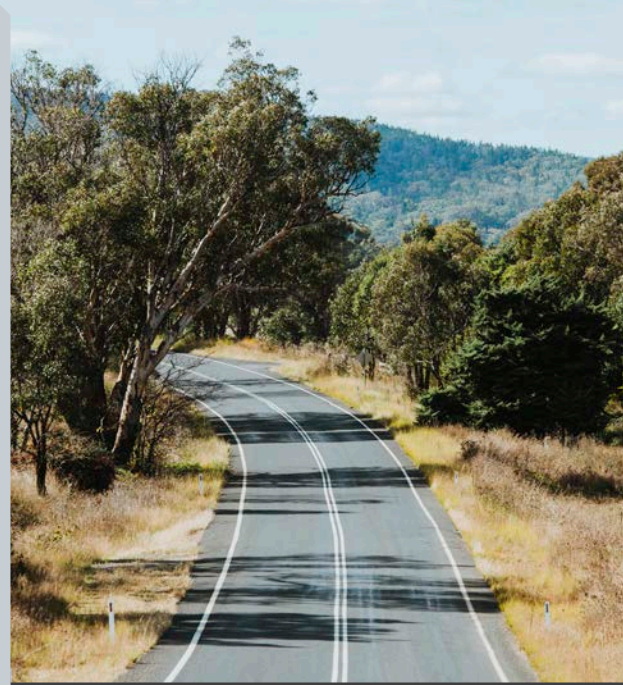
IMPROVE ROAD SAFETY

Road safety improvements are underway on Cope Road, from Mineshaft Lane Gulgong to the Waste Transfer Station at Ulan.

Works include a heavy patching program already in progress to address small failures of road pavement. The installation of audio tactile line marking (ATLM) and retro-reflective pavement markers (RRPMs) is scheduled to start in April 2025. The project is a Council initiative in response to a history of fatigue-related accidents, including a tragic fatality in 2018. Council has obtained funding through Transport for NSW's Towards Zero Safer Roads Program (Round 2) to improve safety.

RRPMs provide visual reflective aids to indicate lane boundaries, offer guidance for turning, and warn of potential hazards. ATLMs, commonly known as rumble strips, have been proven to reduce crashes by 15 to 25 per cent and specifically reduce the risk of head-on and run-off-road crashes. In accordance with Transport for NSW guidelines they are not installed in areas within 200m of a residential building.

The road will remain open throughout the project. Residents are urged to take care and obey all traffic management signs and instructions. For more information visit midwestern.nsw.gov.au/Services/Roads.



NSW Seniors Festival

3-16 March 2025

Time to shine



CELEBRATE OUR SENIORS AT ANNUAL FESTIVAL

From 3 to 16 March the region will celebrate our seniors with an exciting program of activities across Mudgee, Gulgong, Rylstone and Kandos. Subsidised activities include a ZigZag Railway bus trip, Premier's Gala Concert, competitions, workshops and more. A festival highlight is Elvis Impersonator Terry Leonard, featured at the Afternoon Tea and Mudgee Seniors Lunch at Club Mudgee, on 6 and 10 March respectively.

The art and craft, photography, poetry and prose exhibition opens 6 March and will be on display until 16 March at Mudgee Arts Precinct. Full details can be found on Council's website: midwestern.nsw.gov.au/Community/Events-directory/NSW-Seniors-Festival.

UNDERSTANDING STRATEGIC PLANNING IN COUNCIL

Strategic Planning involves a long-term vision for future development through strategies, policies, and frameworks. It allows Council to have a consistent and planned approach to development and helps preserve aspects that are most important to residents, while also appropriately managing land supply to support the region's growing population.

One of the roles of Strategic Planners is to assess Planning Proposals, which are applications to amend the Mid-Western Local Environmental

Plan 2012 to change the zoning and or what types of developments are prohibited or permitted. A Planning Proposal can be submitted for a singular lot or for multiple lots, by Council or an applicant. It can be prepared to change the land use zoning, minimum lot size, or change development standards such as the maximum building height. To learn more about Council planning processes visit midwestern.nsw.gov.au/Development/Strategic-Land-Use-Planning.



SIGN UP TO YOURWATER

Sign up to Council's Smart Water Meter portal, YourWater, and keep track of your water usage. Along with daily data on the amount of water being used in the home, customers can review water charges and set up email and SMS alerts to notify of possible water leaks and high consumption periods. Register at yourwater.midwestern.nsw.gov.au.

FREE LIBRARY TERM ACTIVITIES

Free activities for children in term 1 have recommenced at libraries across the region. The weekly 'Circle of Stories' program for the 0-5 age range will run at Gulgong, Kandos, and Mudgee. There are two after school activities also offered at Mudgee Library, which develop engineering and creative skills and are tailored to children in school years K-2 and school years 3-6. Bookings are essential, visit mwrclibrary.eventbrite.com.au.

BOOK A COUNCIL VENUE

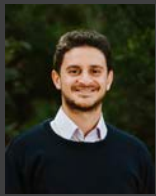
Council has a variety of venues for hire for events ranging from community halls in Mudgee, Gulgong, Rylstone and Kandos, to the Cultural Workshops Building and conference rooms. If you are interested in booking a venue for your next event please visit Council's website.

EVENTS ASSISTANCE OPEN

Local event organisers are encouraged to apply for funding and in-kind support through Council's Events Assistance Program. The Program is open to not-for-profit events that are being held from 1 July to 31 December 2025. Organisers can apply for up to \$3,000 in assistance. Applications are on Council's website and close 4.30pm on Monday, 31 March.



CR DES KENNEDY
MAYOR
6378 2850



CR ALEX KARAVAS
DEPUTY MAYOR
0428 670 905



CR MARCUS CORNISH
0437 549 237



CR KATIE DICKER
0407 234 849



CR ELWYN LANG
0458 595 380



CR ROBBIE PALMER
0407 246 381



CR ROD PRYOR
0476 462 293



CR PETER SHELLEY
0403 156 405



CR PERCY THOMPSON
0428 740 226
6374 0226

EVENTS CALENDAR



7
MAR

Wirimbili Community Garden Gathering

Wirimbili Indigenous Plants Community Garden and Cultural Centre, Kandos

Free event on the first Friday of each month from 4pm-6pm.



19
MAR

Mid-Western Regional Council Meeting

Council Chambers, Market Street, Mudgee. From 5.30pm

Meeting live-stream available on Council's website midwestern.nsw.gov.au.

All information correct at the time of publication. Events may be subject to change. Please contact event organisers for further details.



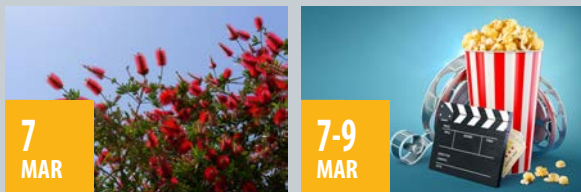
Stay up to date with Council news as it happens...

like or follow 'Mid-Western Regional Council' on Facebook and LinkedIn.

Follow '@choosmudgeeregion' on Instagram, follow 'mwrCouncil' on TikTok.

Mid-Western Regional Council

86 Market Street | PO Box 156 MUDGEE 2850
T 02 6378 2850 or 1300 765002 | F 02 6378 2815
E council@midwestern.nsw.gov.au
midwestern.nsw.gov.au



7-9
MAR

Town Hall Cinema

Town Hall Mudgee

Adults \$15, children/concession \$10 and children under 5 enter free. Bookings and screenings on Council's website.



3-16
MAR

NSW Seniors Festival

Mudgee, Gulgong, Rylstone, Kandos

Celebrate our seniors with an exciting program of activities across the region. Visit Council's website for the full program.



15
MAR

Can Cruise Car Rally

Mudgee Showground

One-day car and motorbike rally, starting at Mudgee Showground from 8am, travelling through Mudgee CBD on a road cruise through the region.



22
MAR

Putta Bucca Carp Muster

Putta Bucca Wetlands

Competition starts at 8am, with a sausage sizzle plus lucky door and category prizes. Registration is free on the day.

Live.

The annual Putta Bucca Carp Muster is on Saturday 22 March from 8am to 1pm at Putta Bucca Wetlands. This is a free event for all ages and fishing abilities. All carp must be returned for measuring by 12pm to be eligible for category prizes. There will be a sausage sizzle with lucky door and category prizes announced at 1pm. Participants and spectators can also take advantage of the North West Fisheries educational trailer. Entrants over 18 must present their fishing licence upon entry. Registration is free on the day. Visit midwestern.nsw.gov.au/Community/Events-directory/Putta-Bucca-Carp-Muster.

Work.

Mid-Western Regional Council is an award-winning organisation with a wide variety of career opportunities in fields such as administration, planning and development, water supply, parks and gardens, libraries, operations, and community services. As an equal opportunity employer, Council fosters a diverse workforce. For current positions vacant, go to the 'Careers' section on Council's website.

Invest.

According to the latest data from Jobs & Skills Australia, the region's unemployment rate increased from 1.4% to 1.8% in the September 2024 quarter. The unemployment rates of Mudgee, Gulgong, and Rylstone-Kandos have increased in line with this to 1.7%, 1.5% and 3.0% respectively. The region's labour force is now estimated at 14,255.

Visit.

Nestled on the Cudgegong River in Wollemi National Park, Ganguddy is a breathtaking escape surrounded by striking escarpments, rugged gorges, and abundant wildlife. This serene haven is perfect for camping, swimming, birdwatching, bushwalking, and canoeing, offering endless opportunities to explore and unwind in nature. Whether you seek adventure or relaxation, Ganguddy's stunning landscapes make it an unforgettable destination.