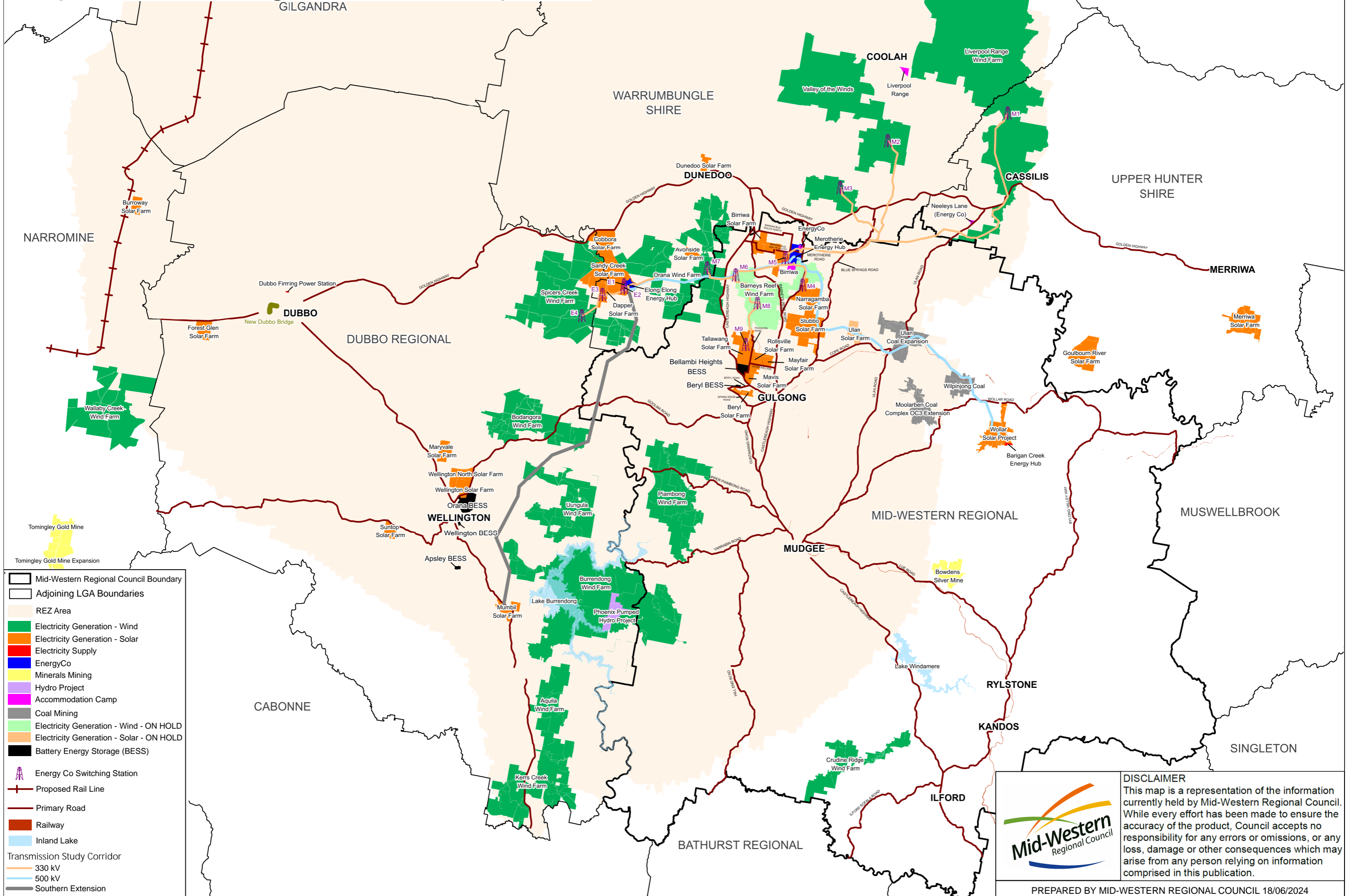


# Proposed State Significant Development



	Mid-Western Regional Council Boundary
	Adjoining LGA Boundaries
	REZ Area
	Electricity Generation - Wind
	Electricity Generation - Solar
	Electricity Supply
	EnergyCo
	Minerals Mining
	Hydro Project
	Accommodation Camp
	Coal Mining
	Electricity Generation - Wind - ON HOLD
	Electricity Generation - Solar - ON HOLD
	Battery Energy Storage (BESS)
	Energy Co Switching Station
	Proposed Rail Line
	Primary Road
	Railway
	Inland Lake
Transmission Study Corridor	
	330 kV
	500 kV
	Southern Extension



**DISCLAIMER**  
 This map is a representation of the information currently held by Mid-Western Regional Council. While every effort has been made to ensure the accuracy of the product, Council accepts no responsibility for any errors or omissions, or any loss, damage or other consequences which may arise from any person relying on information comprised in this publication.